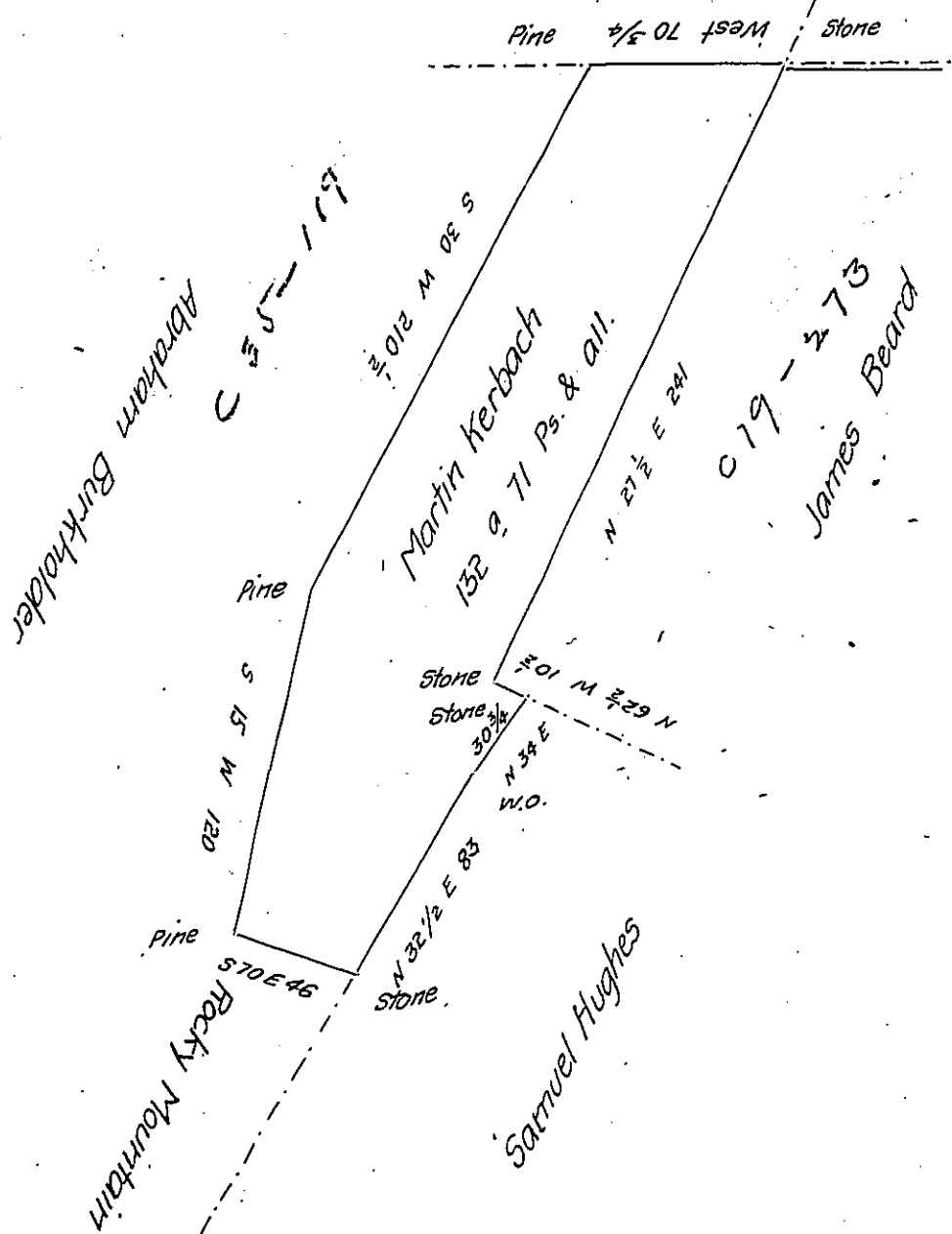


Heirs of Jas Orbison



Draught of a Tract of Land Situate in Guilford Township  
 Franklin County Containing One hundred and thirty two acres and Seventy  
 one perches & allowance of Six P. Ct for Roads. Surveyed the 7<sup>th</sup> day of  
 March 1816 in pursuance of a Warrant Granted Martin Kerbach for 400<sup>a</sup>  
 dated the 13<sup>th</sup> day of May 1793

Arch<sup>d</sup> Fleming D.S.

Rich<sup>d</sup> T. Leech Esq<sup>r</sup>  
 Surveyor General

IN TESTIMONY that the above is a copy of the original remaining on file in  
 the Department of Internal Affairs of Pennsylvania, made  
 conformably to an Act of Assembly approved the 16th day of  
 February, 1833, I have hereunto set my Hand and caused  
 the Seal of said Department to be affixed at Harrisburg,  
 this twentieth day of July 1905

*Loac P. Brown*  
 Secretary of Internal Affairs.